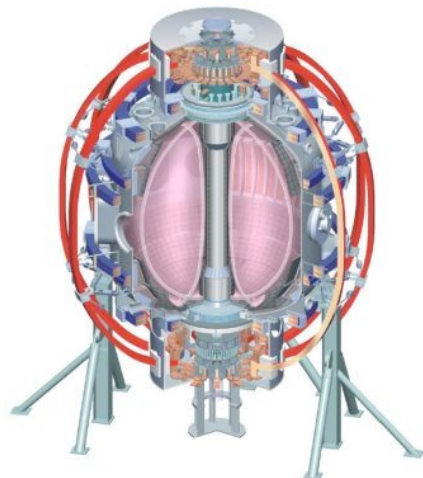


Optimization of High- I_N Scenarios at Reduced Density

**S. Gerhardt, M. Bell, E. Kolemen, R. Kaita,
H. Kugel, R. Maingi, J. Menard, D. Mueller,
S. A. Sabbagh, C. Skinner, V. Soukhanovskii**

**NSTX 2010 Research Forum
LR TSG Breakout Session
Dec. 2nd, 2009**

College W&M
Colorado Sch Mines
Columbia U
CompX
General Atomics
INEL
Johns Hopkins U
LANL
LLNL
Lodestar
MIT
Nova Photonics
New York U
Old Dominion U
ORNL
PPPL
PSI
Princeton U
Purdue U
SNL
Think Tank, Inc.
UC Davis
UC Irvine
UCLA
UCSD
U Colorado
U Illinois
U Maryland
U Rochester
U Washington
U Wisconsin



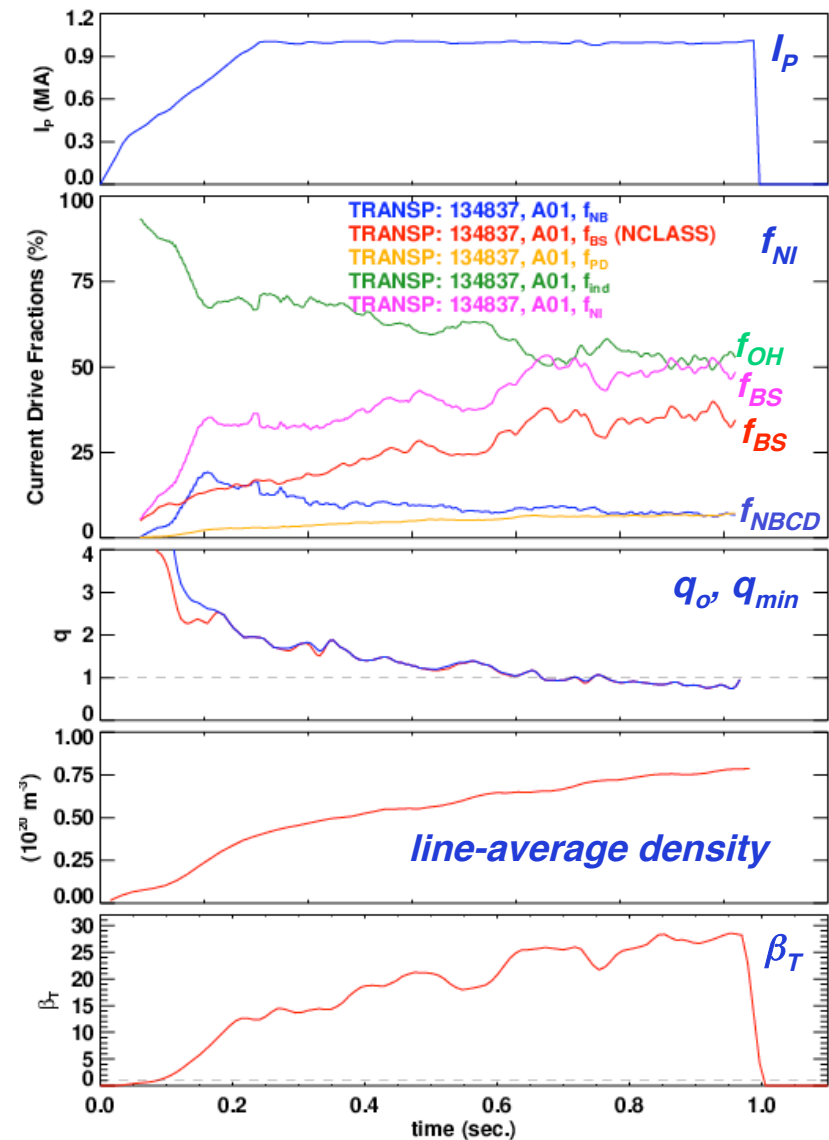
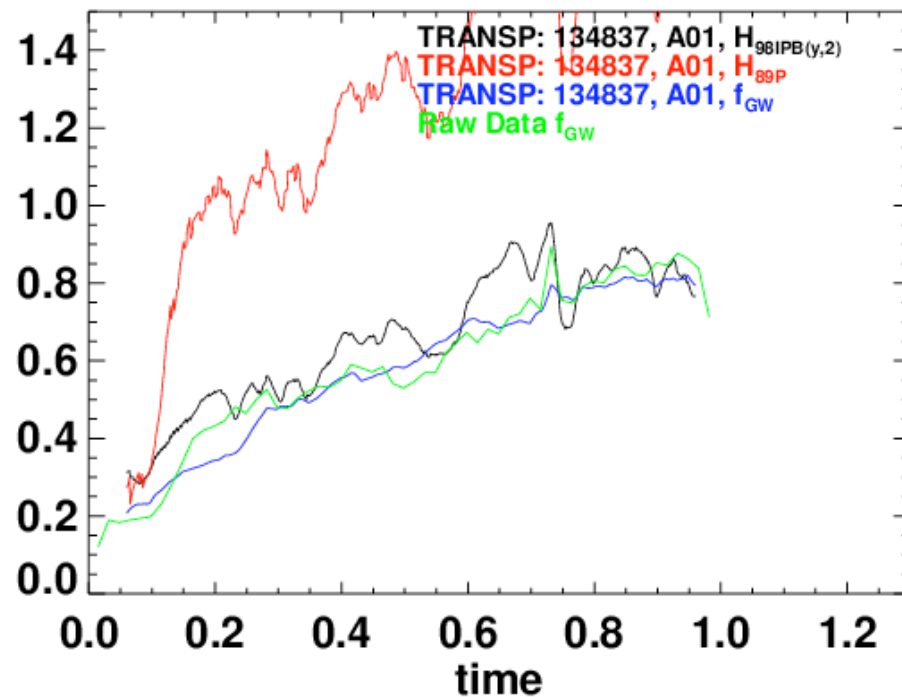
Culham Sci Ctr
U St. Andrews
York U
Chubu U
Fukui U
Hiroshima U
Hyogo U
Kyoto U
Kyushu U
Kyushu Tokai U
NIFS
Niigata U
U Tokyo
JAEA
Hebrew U
Ioffe Inst
RRC Kurchatov Inst
TRINITY
KBSI
KAIST
POSTECH
ASIPP
ENEA, Frascati
CEA, Cadarache
IPP, Jülich
IPP, Garching
ASCR, Czech Rep
U Quebec

Overview

- Background:
 - High neutron flux ST-CTF designs generally stipulate high κ , I_N , & β_N , but lower f_{GW} in order to increase the NBCD.
 - Shots in XP-948 last year achieved (essentially) appropriate values of κ , & β_N , **but too much density, too little NBCD**, I_N too low.
- Goals:
 - Add improved control tools (β_N control, X-point height control, improved RWM control ?) to high κ , I_N , & β_N scenario with a cold LLD (not in LiTSG).
 - Rerun test cases with a warm LLD to examine operation at reduced density.
 - Assess changes in confinement,
 - Current components,
 - Core n=1 stability.
- Contributes to:
 - Long term ST programmatic goals.
 - Research Milestone R(11-2): Assess the dependence of integrated plasma performance on collisionality.
 - Research Milestone R(11-3): Assess the relationship between lithiated surface conditions and edge and core plasma conditions.

Results Last Year Showed Operation with $\beta_T \sim 25\%$, But Too Low NBCD

- $\sim 50\%$ non-inductive current at $f_{GW} \sim 0.8$.
- Rapid drop in q_{min} is unhealthy.
 - Increase core T_e with LLD?



Proposed Run Plan: Very Tentative Pending LLD Experience

- Establish baseline scenario with improved control. (1 day in ASC)
 - Pick high- δ scenario from 2009 (134837, 135129 are good candidates)
 - This step with a cool LLD.
 - X-point height control
 - Scan β_N request in order to achieve highest β_N consistent with ideal stability.
 - Modifications to squareness, RWM control?
- Repeat with LLD (same day?, different day?) (1 day in LR TSG)
 - Take best discharge from first day.
 - Repeat with reduced density.
 - Like to scan the density if at all possible. Use SGI?
 - Divertor puff for reduced Carbon influx?
 - Implement early EFC as needed.
 - Other impurity reduction techniques...dropper? A little HHFW?
 - Need LLD operating experience to properly address this step.

Backup

NSTX is Beginning To Approach Interesting Regimes For an FNSF/ST-CTF

- ITER-era goal for ST: make a CTF, irradiate materials (would like 2MW/m²).
- Biggest gap between NSTX and ST-CTF may be current drive

	NSTX, 134837	Peng 2005 ¹ , Phase 3	Wilson 2004 ²	Peng 2009 ³
Wall Loading (MW/m ²)	Ha!	2	1.5	
κ	2.7	3.1	2.5	
I_N	4	5.8	6.1	
f_{GW}	0.8			
β_N	6	5.9	3.5	
β_T	28	28	22	
f_{BS} (%)	35	0.5	0.38	
f_{NBCD} (%)	10			
H_{98}	0.8	1.5	1.3	

[1] Peng et al, PPCF 2005 [2] Wilson, et al., IAEA 2004 [3] Peng, et al., APS 2009

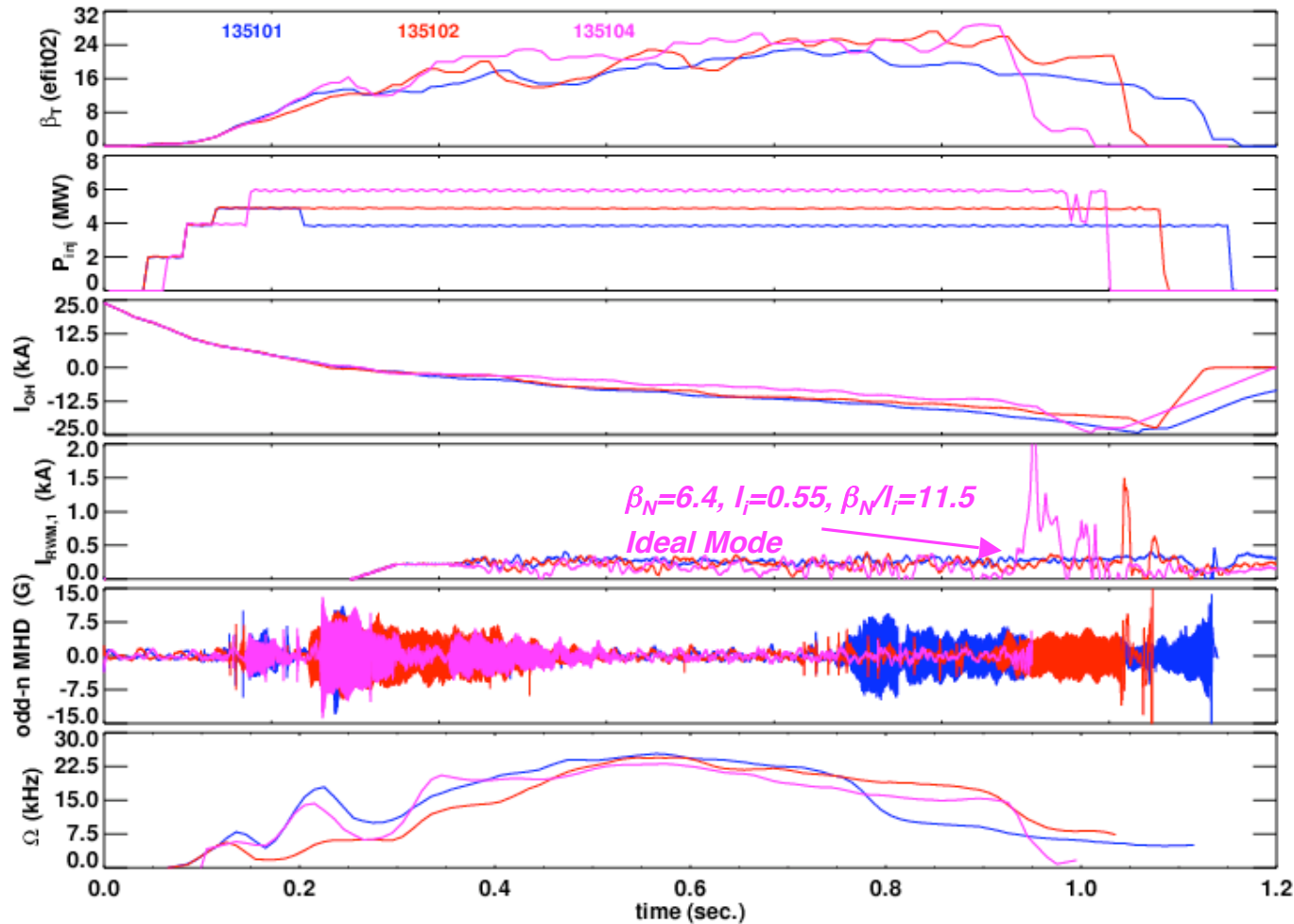
Too much power → Ideal MHD Too little power → Rotating MHD.

135101: 4 MW Early Rotating Mode

135102: 5MW, Delayed Rotating mode

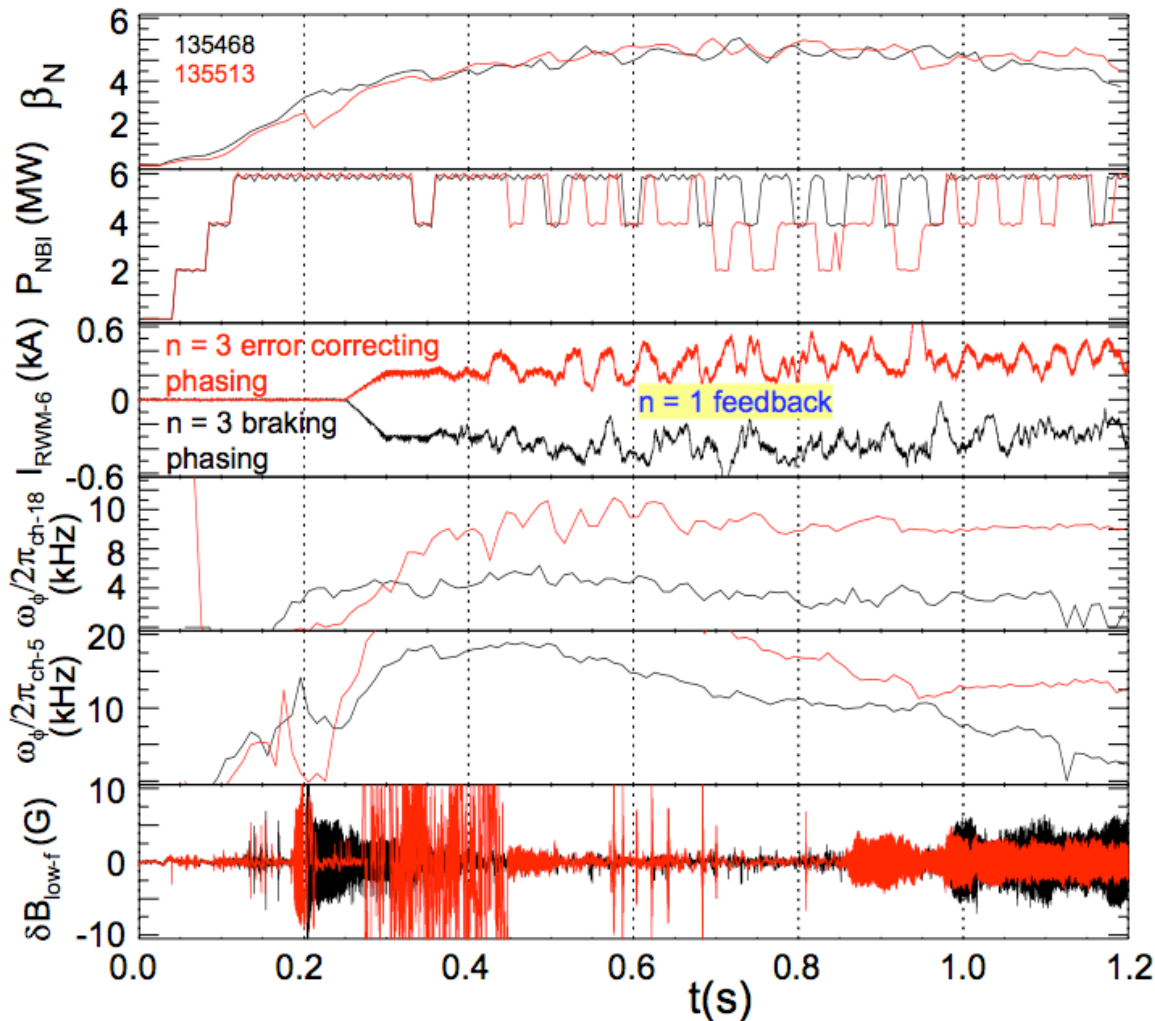
135104: 6 MW, Ideal Mode

All $I_p=1\text{MA}$, $B_T=0.4\text{ T}$



Need to operate at the highest beam powers consistent with stability → β_N control

β_N Control Has Been Demonstrated in 2009



- β_N algorithm compensates for loss of confinement with $n=3$ braking.
- Control works over a range of rotation levels
- Proposal by SPG in MS-TSG to optimize the system.

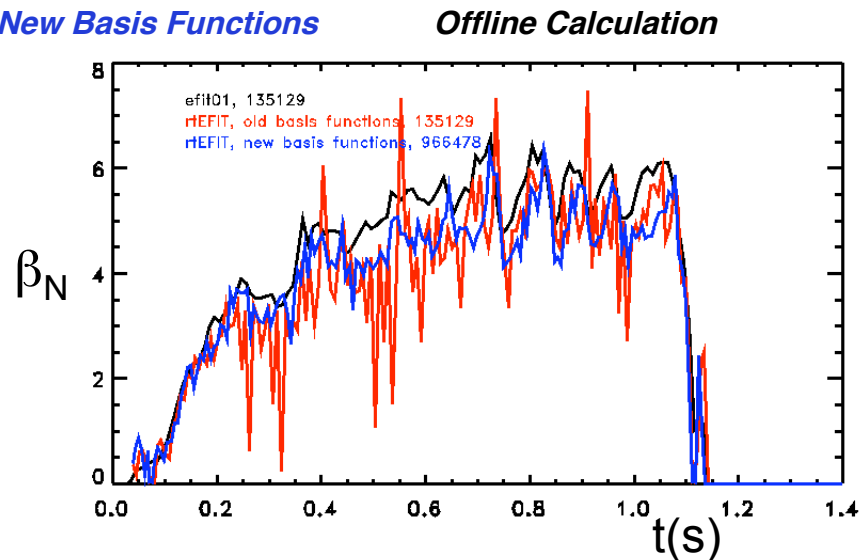
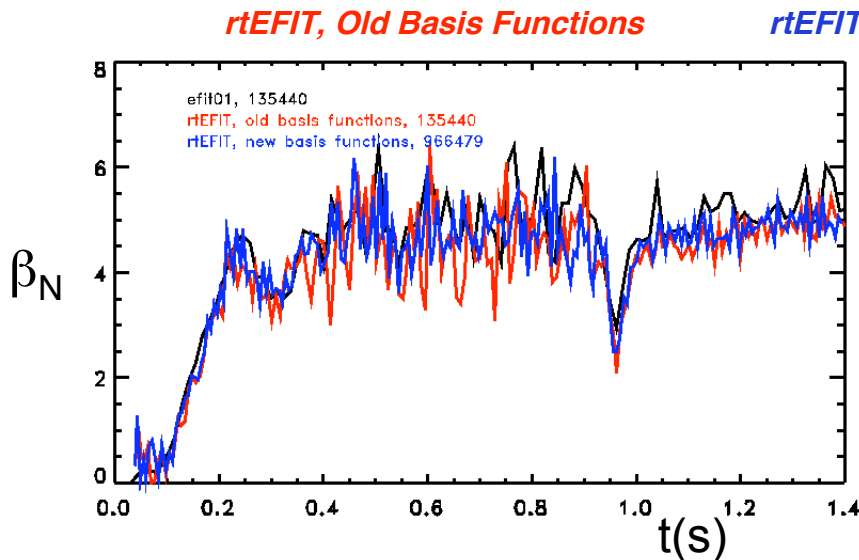
S.A. Sabbagh, 2009 NSTX Results Review

Modifications to the rtEFIT Basis Functions Resulted in Improved Real-time Reconstructions

- Occasional poorly converged equilibria lead to incorrect outer gap, β_N
 - Kick off an deleterious transient in the vertical field coil current.
 - Edge current not allowed
- New basis function model based on those developed for off-line magnetics-only reconstruction (Columbia University)
 - Tested on literally > 2 million equilibria
 - Finite edge current through $ff'(\psi_n)$
- Considerable real-time reconstruction improvement
 - Reduction in β_N “noise” indicative of improved reconstructions

$$p'(\psi_n) = a_1 \psi_n (1 - \psi_n)$$

$$ff'(\psi_n) = b_0 + b_1 \psi_n \left(1 - \frac{1}{3} \psi_n^2\right) + b_2 \psi_n^2 \left(1 - \frac{2}{3} \psi_n\right)$$



Improvement made on 2nd to last day of run...we should take advantage of it.

New Tools This Year Offer Hope For Improved Performance

- Improved rtEFIT basis vectors
 - Implemented on 2nd to last day of run
 - Use the EFIT01 formulation
 - Appeared to reduce transients in gap-out, β_N .
- β_N -control via NB modulations
 - First implemented last year, showed considerable promise.
 - Proposal in MS-TSG to optimize gains, test performance.
 - MS milestone on disruption avoidance
- RWM/RFA control development
- Liquid Lithium Divertor
 - Should provide significant pumping capability, leading to density reduction, increased T_e/n_e .
 - Key to increasing the NBCD efficiency.
- Upper/Lower X-point Height Control
 - Proposed in ASC-TSG by E. Kolemen.
- Squareness control
 - Pending progress on PF-4/PF-5 mutual force interlock.